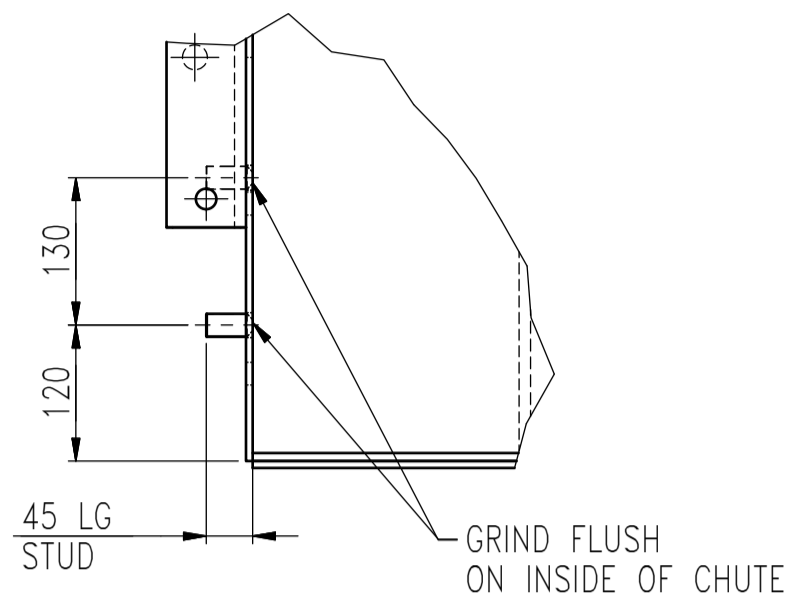
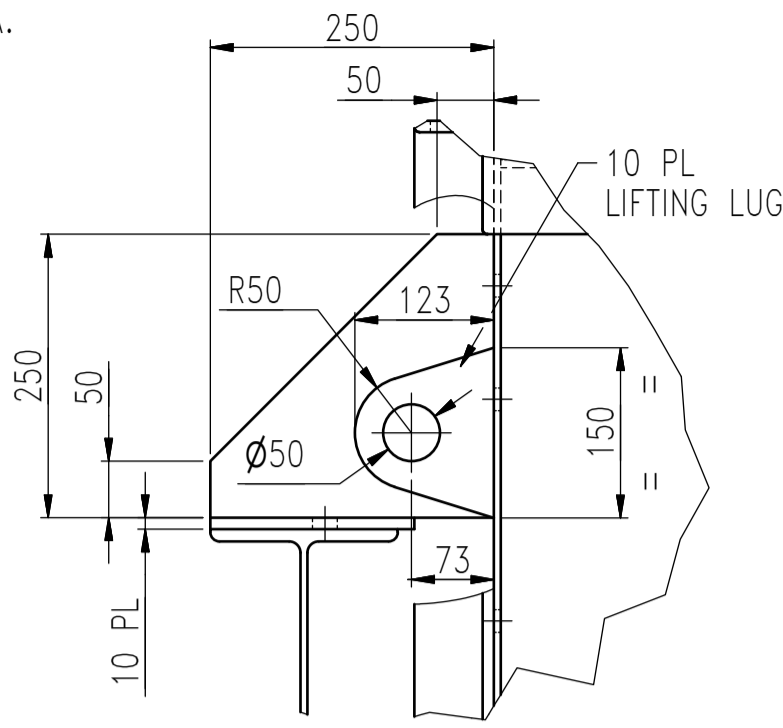


GENERAL NOTES

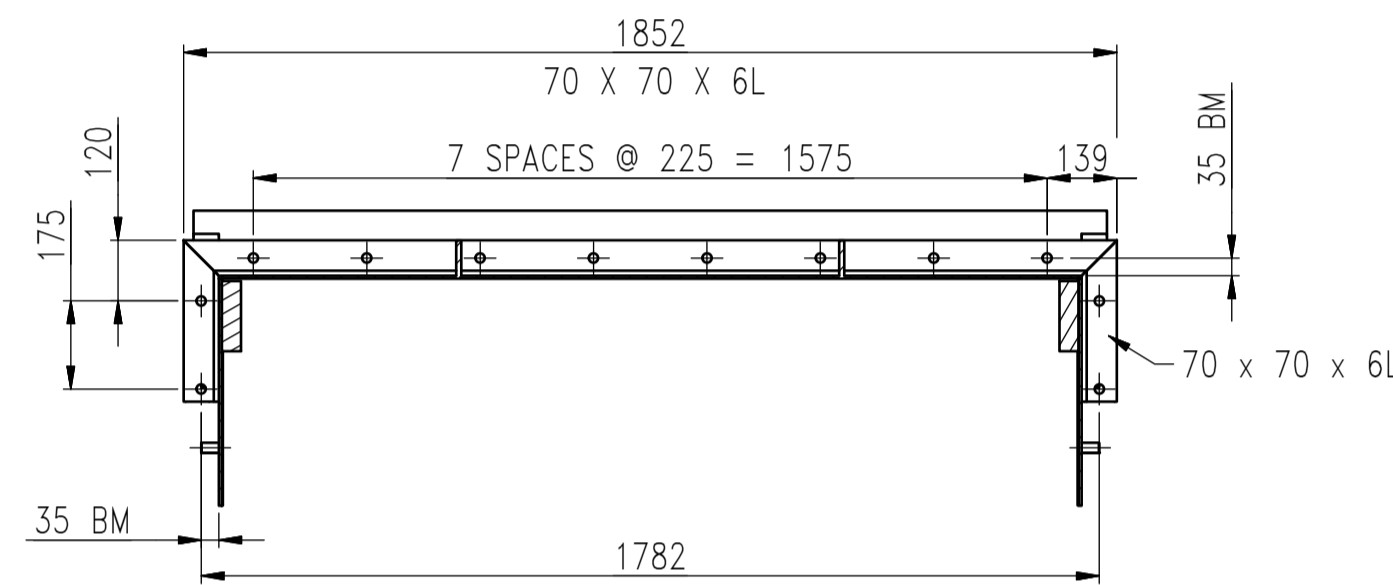
- 1: ALL HOT ROLLED STEEL TO BE SANS 1431 GR 350 WA.
- 2: ALL PLATE WORK TO BE EN 10025 GR S355J U.O.N.
- 3: ALL WELDS TO 6 mm C.F.W U.O.N.
- 4: WELDING OF STRUCTURAL STEEL TO AWS D1.1.
- 5: ALL Ø22 HOLES FOR M20 HEX HEAD BOLTS U.O.N.
- 9: ALL PAINTING AS PER SISHEN SPECIFICATIONS.
- 10: ALL BURRS AND SHARP EDGES TO BE REMOVED.



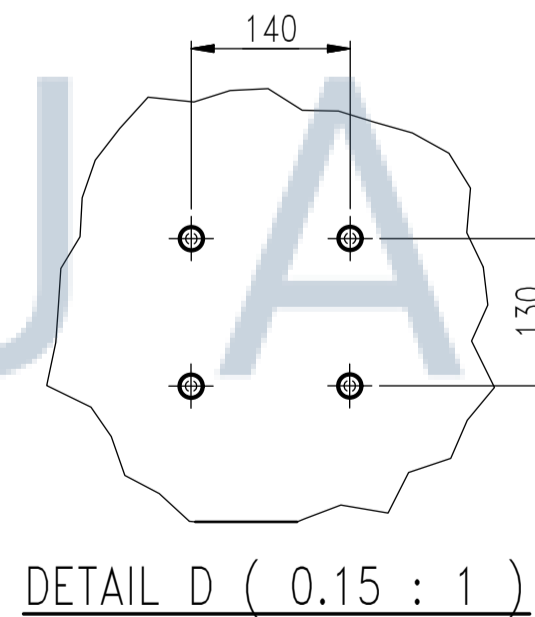
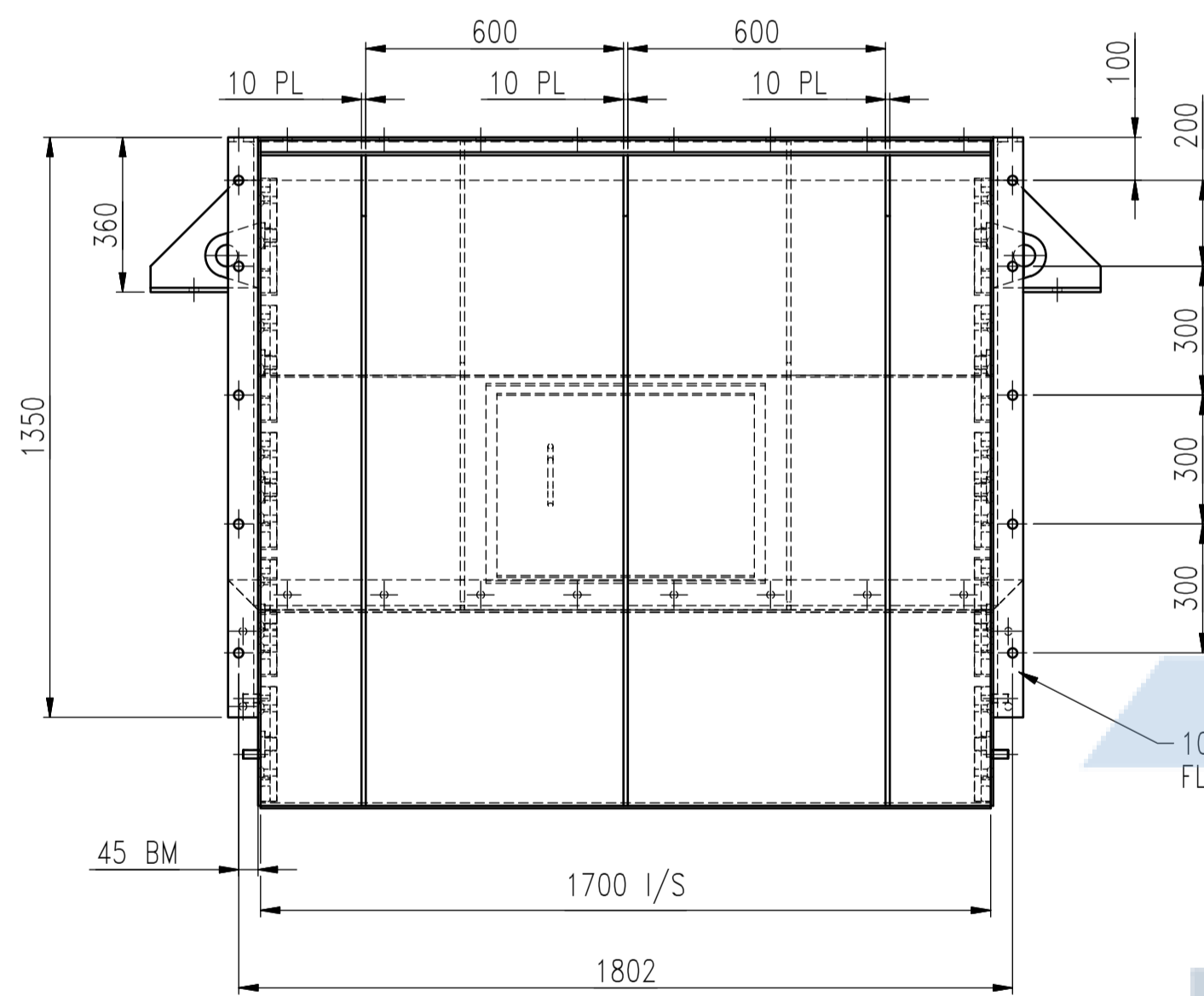
DETAIL E (0.15 : 1)



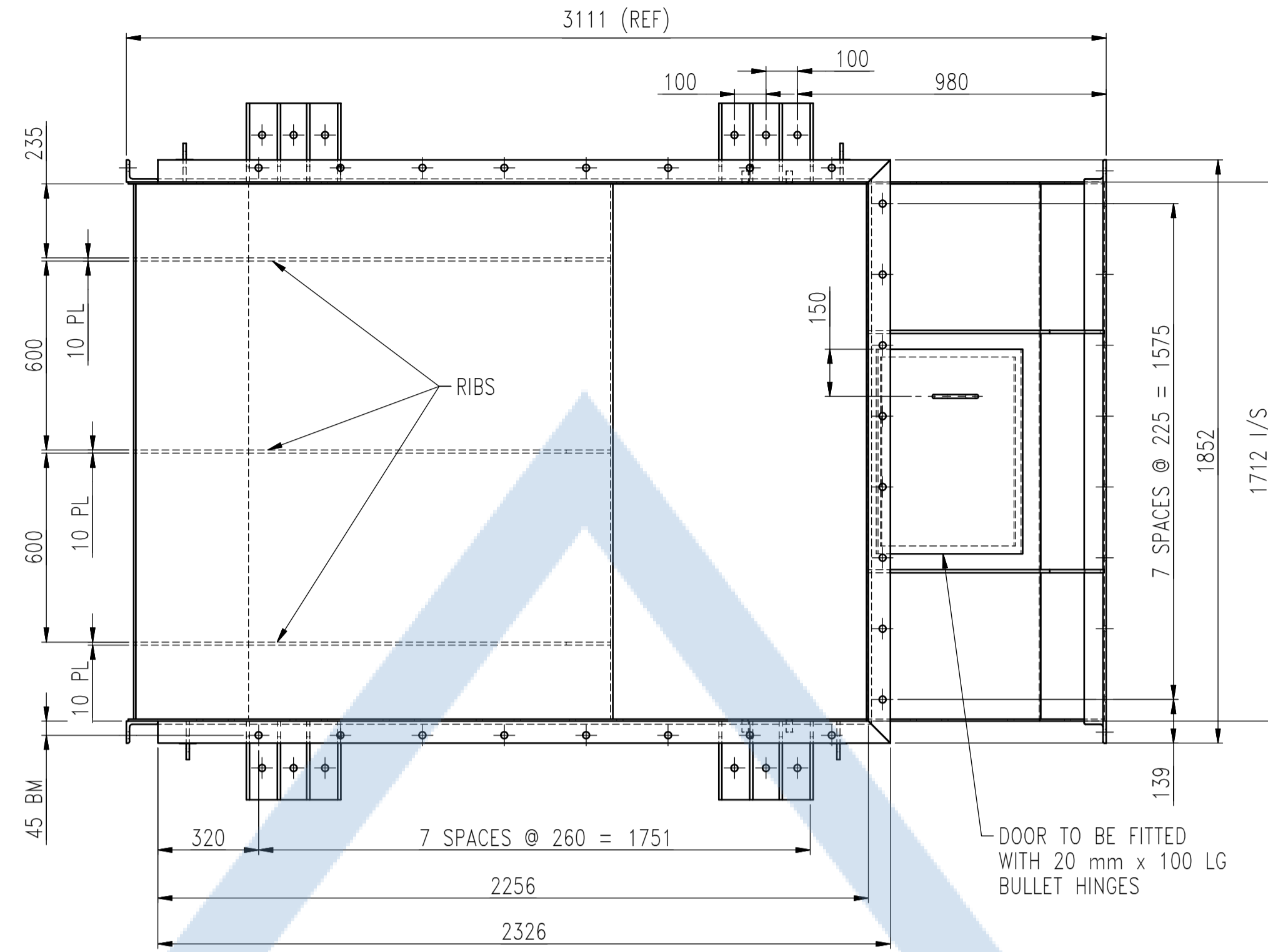
DETAIL B (0.15 : 1)



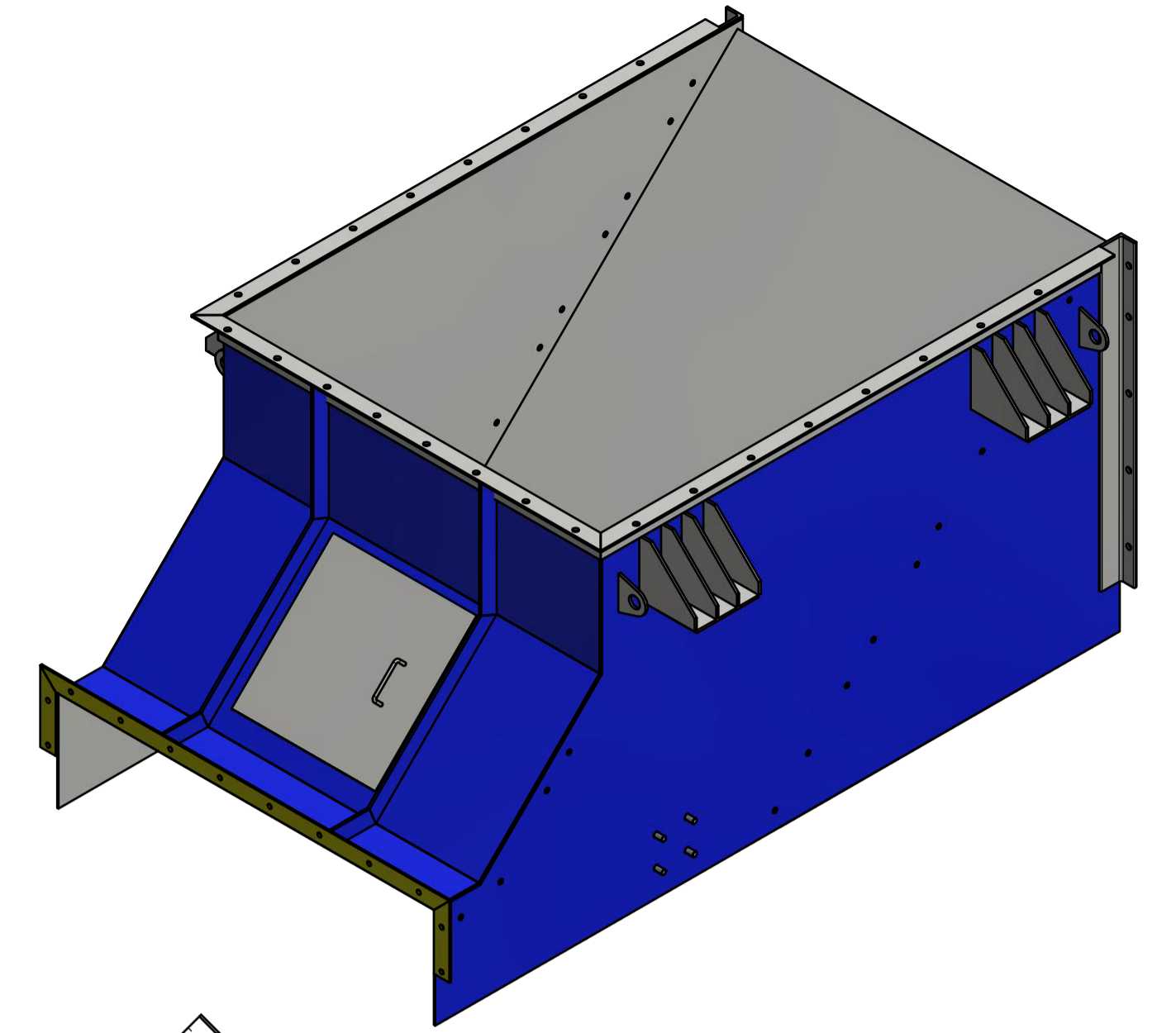
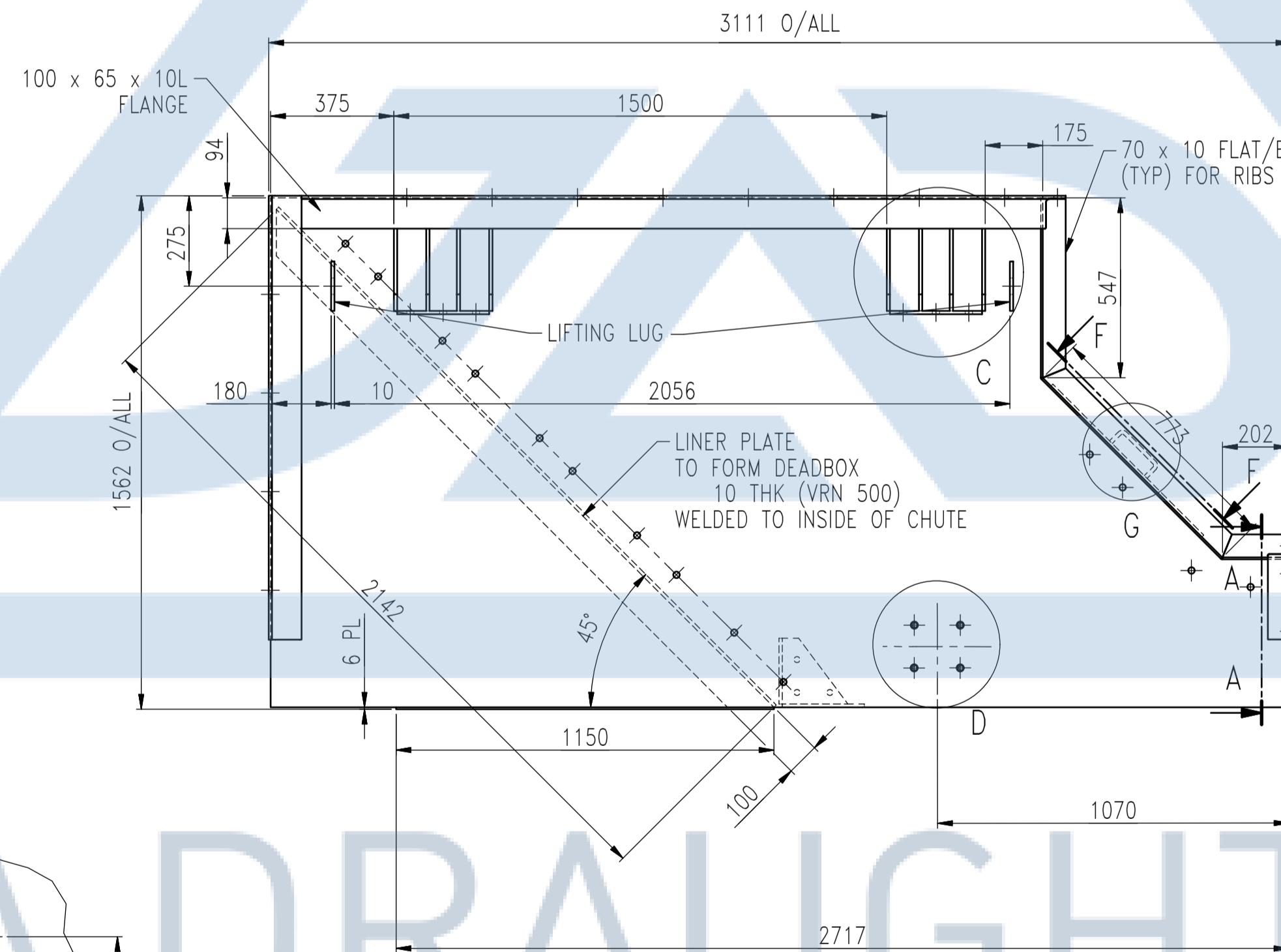
SECTION A-A



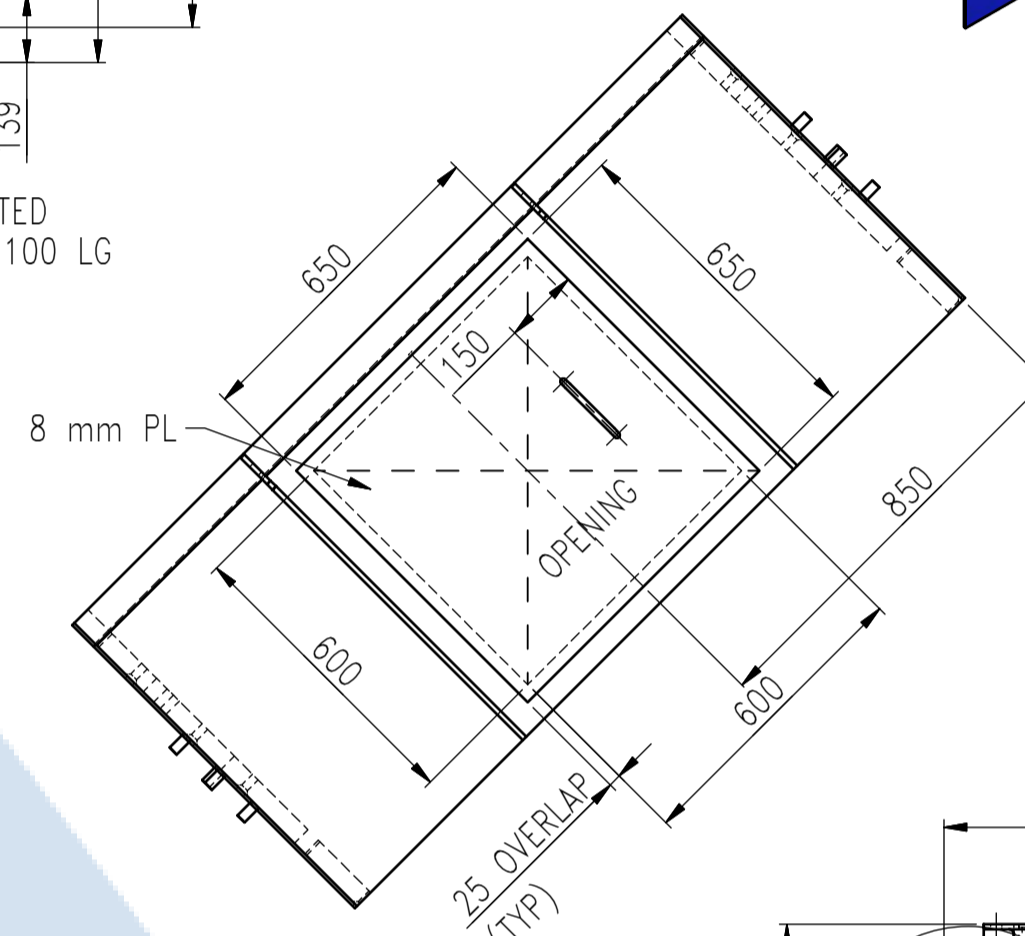
DETAIL D (0.15 : 1)



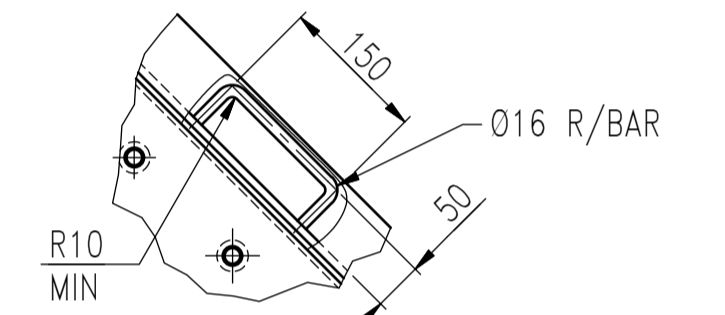
ITEM 6-HEAD CHUTE MID SECTION
ALL WELDED CONSTRUCTION
MATL: 8 mm PLATE



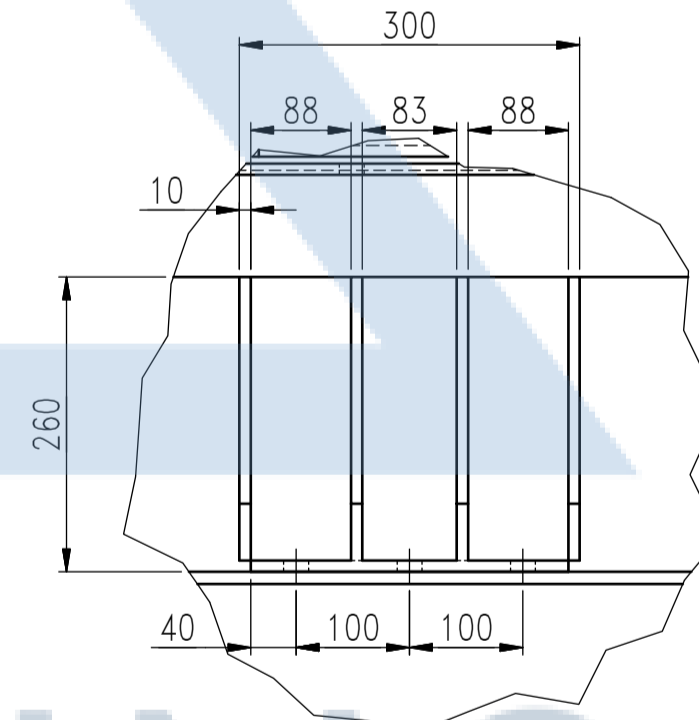
ISOMETRIC VIEW



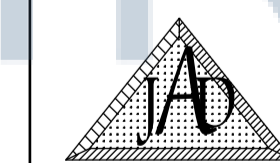
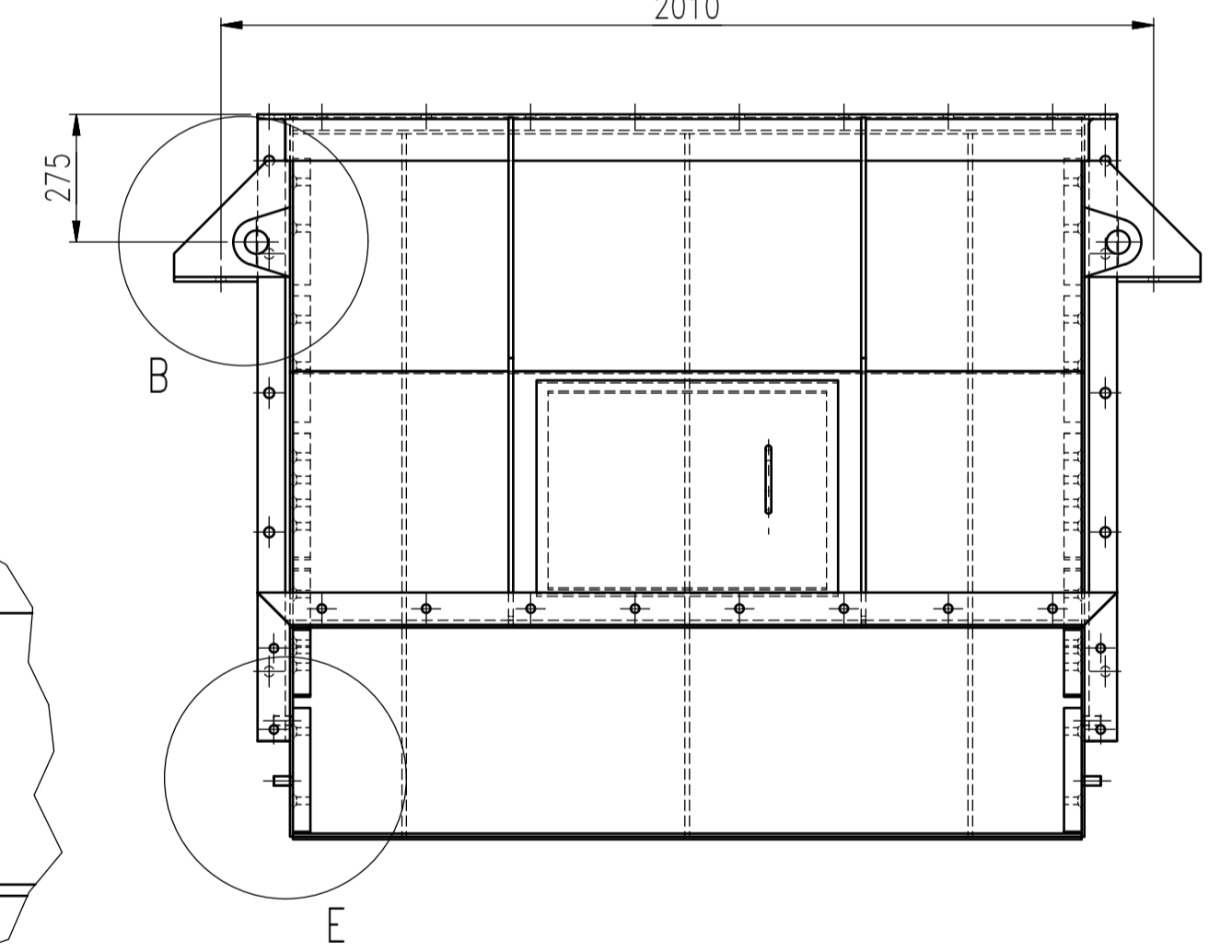
SECTION F-F



DETAIL G (0.13 : 1)



DETAIL C (0.15 : 1)



JA DRAUGHTING

VAN DER BIJLPARK
CELL: 082 563 1408
E-MAIL: jadraughting@gmail.com

EXAMPLE NOT FOR MANUFACTURE

MACHINING TOLERANCES (U.O.S) TO ISO 2768 & DIN 7168 - MEDIUM		TOL ±	
ABOVE	INCL.		
0.5	6	0.1	
6	30	0.2	
30	120	0.3	
120	315	0.5	
315	1 000	0.8	
1 000	2 000	1.2	
2 000	4 000	2	
4 000	8 000	3	
8 000	12 000	4	
12 000	16 000	5	
16 000	20 000	6	

DRN	A. LE GRANGE
DATE	2015/08/21
APPROVED	MAN/SUPT/ENG
PROJN	SCALE
AUTH.No	DO NOT SCALE

EXAMPLE
DIVERTER CHUTE
BACK END CHUTE
DETAIL